



CEMHER<sup>®</sup>

- ORIGIN -

MICROCEMENT

---

STATE OF THE ART COATINGS



# #INDEX

13

**MICRODUO**

21

**MICRODUR**

29

**MICROLEVEL**

37

**MICROPOOL**

43

**TONERS**

47

**ADHESION PROMOTER PRIMER**

51

**EPOXY**

55

**PRIMERS**

59

**POLYURETHANE**

65

**SPECIALITIES**

"Architecture is not four walls and a roof,  
it is the space and the spirit generated within"

Lao Tsé.

What does a place need if it is to have spirit?

When a space begins to be created it is dead, empty and lifeless. It needs something if it is to become a space with soul, a space that stands out from the rest; a space that makes one feel.

A decorative coating, such as microcement, has the same meaning for a space as the foundations do for a building: the beginning! The beginning of a space that expresses, welcomes, excites, that has life.

Cemher is exactly this, it is THE ORIGIN.

It is the origin of idyllic places, which have yet to be created.

The whole universe the brand comprises is the perfect synergy to start creating spaces.

**And Cemher is your ally.**



C

# IT IS THE PERFECT UNION BETWEEN THE TECHNICAL AND AESTHETIC

Its finish is elegant and minimalist, creating (depending on the microcement chosen) highly decorative marbling effects, capable of embellishing any room. In addition, it goes well with other materials such as wood; when combined to decorate walls or floors they make really special spaces.

# PERFECTLY ADAPTABLE

Its flexibility and minimal thickness allow it to adapt to any type of surface: rough or smooth, horizontal or vertical. There is no need for preparatory works as microcement can be applied directly on to existing materials.



# INFINITE ELEGANCE

Why do we say this? Unlike other materials, this material does not need expansion joints, so the result is a continuous and infinite floor or wall covering.

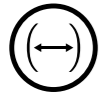
# NO LIMITS

Colours, textures, shapes and different effects. Microcement has no limits when it comes to creating a customised space.

It is a decorative coating containing a cementitious base mixed with polymers, fibres, resins, aerators, ultrafine aggregates and mineral pigments; it does not need expansion joints and it is only 1 mm to 3 mm thick. It is the ideal material to cover walls and floors without having to remove the existing materials.

- Ideal for modern and minimalist environments
- Applicable on all types of surfaces: walls, floors, furniture, swimming pools.
- Continuous flooring (no joints required)
- A wide range of colours
- Different finishes and textures
- Excellent strength
- Easy maintenance

Properties of the Microcement:



Elasticity and flexibility



To fit any shape or geometry



Durable and robust



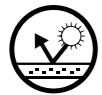
Adherence on all types of substrate



Continuous. Joint-free



Fire-retardant



UV-resistant



Stain repellent



Excellent chemical and mechanical resistance

It is suitable for:



Furniture



Radiant floor



Indoor or outdoor



Adapting to the needs of each space is a priority for our brand; this is why we have established 6 lines of microcement:

microduo

## THE TRADITION

The reflection of the union between traditional and innovation: that is Microduo. A new innovative coating with which Cemher was born to transform the paradigm of decoration and minimalist architecture. Following this release, other microcement variants with very specific characteristics will emerge.

microdur

## THE TRUST

Trusting allows us to disconnect from this constant caution that we must have at home, to prevent small mishaps from day to day. This is possible thanks to the high resistance offered by the Microdur line in floors and walls.

microlevel

## SAFETY

The risk appears when there is a probability that a threat will become a disaster. With Microlevel, thanks to its tendency to flatten, it is certain that the result on horizontal surfaces will be as expected.

micropool

## THE ADAPTATION

Ability to accommodate to survive in a situation different from the original. The pool line perfectly adapts its conditions to an aquatic habitat without sacrificing its essence.

microne.

## SIMPLICITY

Many times we like the complicated thing being able to opt for ease. The complex art of simplicity is found in Microne, a microcement ready to use. Simply open and apply. Excellent for use in wet areas.

microröck.

## THE FORCE

Ability to withstand and resist. This is how force is defined, or put another way, when a knife falls defiantly on the floor of the kitchen and the Microröck line has a high resistance to fight the adversities from day to day.



microduo®

# - THE TRADITION -

## BICOMPONENT MICROCEMENT

Microduo line is characterized by using two components for hardening. The microcement powder must be mixed with the Resincem product, in the appropriate proportion, so that it provides the ideal hardness and adhesion to the system.

It stands out for its easy application and maneuverability to trowel because its hardening time is very long

## MICRODUO'S CHARACTERISTICS



More than 5 h of product life time



Stucco effect

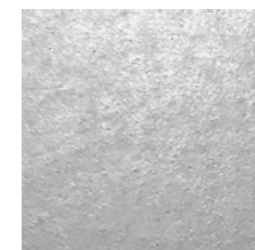
**30** MPa

Compression resistance

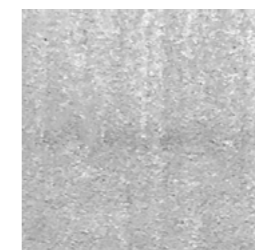
**2** Components

Resin + Powder

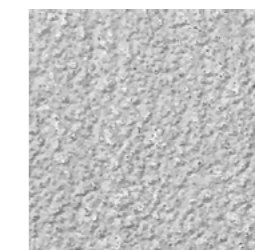
## GRANULOMETRIES



Fine



Medium



Base



## microduo. FINE

12 It is a microcement of fine texture finish. Adding the toner of the chosen color we will obtain a decorative surface with stucco effect. It is recommended only for vertical surfaces, since it is not non-slip.

Performance: 0,5 Kg/m<sup>2</sup>

Proportion: 10 Kg Microdur Fine + 5 L de Resincem

Format: 10 Kg

It is suitable for:



Vertical surfaces



## microduo. MEDIUM

Having thicker granulometry than Microduo Fine, its finish is more subtle (less water). Adding the toner of the chosen color, the result will be a slightly textured surface, much more resistant and of superior hardness. The thickness of the aggregate makes it non-slip. It can be applied on a multitude of supports, however, its most recommended use is on pavements with medium traffic. It can also be applied on vertical surfaces or walls.

Performance: 0,6 Kg/m<sup>2</sup>

Proportion: 20 Kg Microduo Medium + 8L the Resincem

Format: 20 Kg

It is suitable for:



Vertical surfaces



Floor



Antislip

Qualities:



## microduo. BASE

It is a microcement that is used as preliminary step to the Microduo Fine or the Microduo Medium. However, it can also be applied as a single step for the same base to act as a final finish. The result will be a much rougher surface, without any Stucco Effect and with a high non-slip power. Adding the Toner of the chosen color we will obtain a decorative finish, with a high planimetry that will allow the product to match very well on horizontal surfaces. It is recommended for pavements and floors with extreme traffic. It can also be applied on vertical surfaces or walls.

Performance: 1 Kg/m<sup>2</sup>

Proportion: 20 Kg Microdur Base + 8 L the Resincem

Format: 20 Kg

It is suitable for:



Vertical surfaces



Floor



Antislip

Qualities:



## RESINCEM

13 Resincem is a special resin for two-component microcement systems (Microduo). When mixed in the appropriate proportions it provides excellent compatibility, hardness and adherence to microcement and mortar systems.

Format: 5 L, 8 L, 10 L and 25 L

# microdur<sup>®</sup>

## - THE TRUST -

### MONOCOMPONENT MICROCEMENT

Microdur line is a monocomponent coating. It only needs to be mixed with water for its hardening. The main difference with respect to those that are combined with resin (Microduo) is that its hardening time is not so long. However, mixing with water and not with resin, gives it simplicity when applying.

### MICRODUR'S CHARACTERISTICS



3 hours life time



High stucco effect

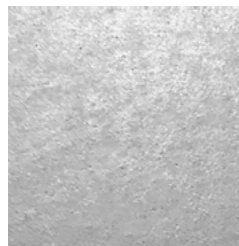
**40** MPa

Compression resistance

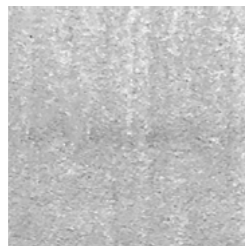
**1** Components

Powder + water

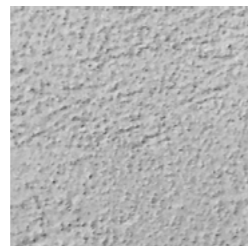
### GRANULOMETRIES



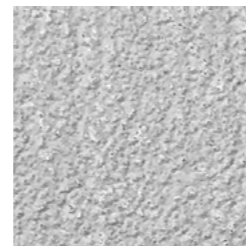
Fine



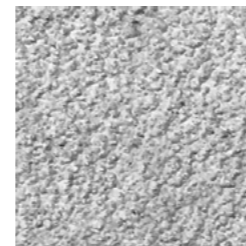
Medium



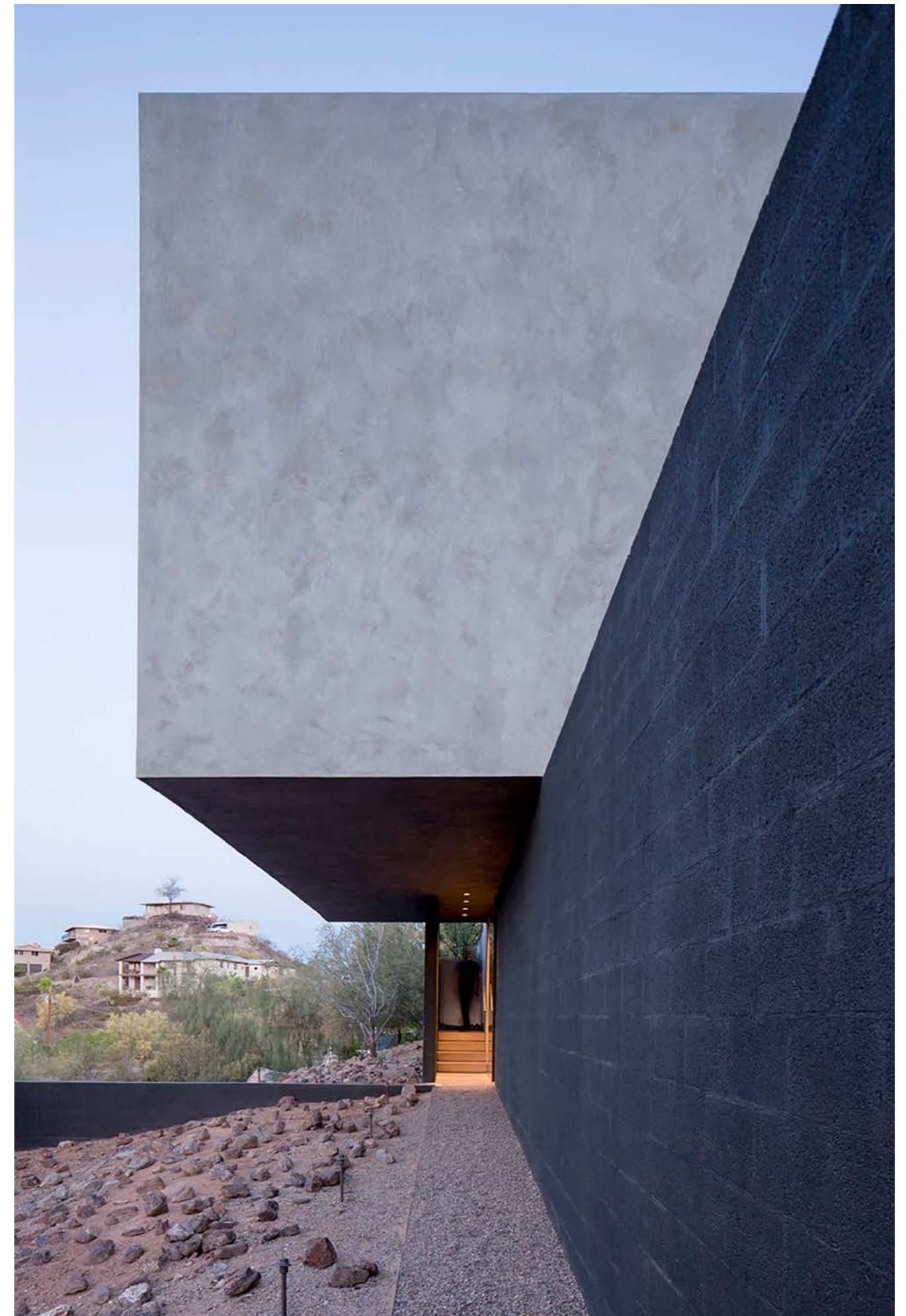
Fine base



Base



Thick base







microdur.  
FINE

16 It is a microcement of fine texture finish. Adding the toner of the chosen color we will obtain a decorative surface with a high stucco effect. It is recommended only for vertical surfaces, since it is not non-slip.

Classified as CT-C30-F9 according to the UNE-EN 13813 standard.

Performance: 0,5 Kg/m<sup>2</sup>

Proportion: 10 Kg Microdur Fine + 4 L of water

Format: 10 Kg

It is suitable for:



Vertical surfaces

Qualities:



UNE EN 13813 CT-C30-F9



microdur.  
MEDIUM

Having thicker granulometry than Microduo fine, its finish is more subtle (less water). Adding the toner of the chosen color, the result will be a slightly textured surface, much more resistant and of superior hardness. The thickness of the aggregate makes it non-slip. It can be applied on a multitude of supports, however, its most recommended use is on pavements with medium traffic. It can also be applied on vertical surfaces or walls.

Classified as CT-C40-F10 according to the UNE-EN 13813 standard.

Performance: 0,6 Kg/m<sup>2</sup>

Proportion: 20 Kg Microdur Medium + 7 L of water.

Format: 20 Kg

It is suitable for:



Vertical surfaces



Floor

Qualities:



UNE EN 13813 CT-C40-F10



Antislip



microdur.  
FINE BASE

It is a low roughness microcement. Adding the toner of the chosen color we will obtain a decorative finish with a very good planimetry on horizontal surfaces. It stands out for having a greater non-slip power and for being more resistant and hard than the Medium and Fine. It is recommended for high traffic pavements and floors. It can also be applied on vertical surfaces or walls. It should be noted that it can also be used as a Base when a base of lower grain size is desired.

Classified as CT-C40-F10 according to the UNE-EN 13813 standard.

Performance: 1 Kg/m<sup>2</sup>

Proportion: 20 Kg Microdur Fine Base + 6 L of water.

Format: 20 Kg

It is suitable for:



Vertical surfaces



Floor

Qualities:



UNE EN 13813 CT-C40-F10



Antislip



microdur.  
BASE

17 It is a microcement with a roughness, a resistance and a hardness superior to the Fine Base. No stucco effect. It stands out for its high non-slip power. Adding the toner of the chosen color we will obtain a rough decorative finish, with a high planimetry that will allow the product to match very well on horizontal surfaces. It is recommended for pavements and floors of extreme traffic. It can also be applied on vertical surfaces or walls. It can be used when an intermediate granulometry base is desired, between the Thick Microdur Base and the Fine Microdur Base.

Classified as CT-C40-F10 according to the UNE-EN 13813 standard.

Performance: 1 Kg/m<sup>2</sup>

Proportion: 20 Kg Microdur Base + 6 L of water.

Format: 20 Kg

It is suitable for:



Vertical surfaces



Floor

Qualities:



UNE EN 13813 CT-C40-F10



Antislip



## microdur. THICK BASE

18 It is a microcement composed of a fairly thick aggregate, so its regularization is very good and allows us to obtain a perfect planimetry with a high covering power. It has no stucco effect. It has a very high compression hardness. In case of opting for the application of Microdur Fino, it is convenient to apply one or two hands of Microdur Medium previously to fill the Thick Base. In this way we will need less layers of Microdur Fino, so we will get more hardness to compression. It can also be applied on vertical surfaces or walls. It is used as a preliminary step for the preparation of Microdur Fine, Microdur Medium, Microdur Base and the Microdur Fine Base.

Classified as CT-C40-F10 according to the UNE-EN 13813 standard.

Performance: 1,5 Kg/m<sup>2</sup>

Proportion: 20 Kg Microdur Thick Base + 5 L of water.

Format: 20 Kg

It is suitable for:

Qualities:



Vertical surfaces



Floor



UNE EN 13813  
CT-C40-F10



Antislip





microlevel®

- SAFETY -

MONOCOMPONENT MICROCEMENT

Microlevel line is characterized by being a coating with a tendency to level, without being a self-leveling. This quality allows the curbs produced by the trowel, in its application to be more tenuous. The stucco effect, characteristic of the microcement, is disguised producing a significantly smoother finish. This material is mixed with water and therefore we talk about its great simplicity of use.

MICROLEVEL'S CHARACTERISTICS



2 hours of product lifetime



Stucco effect



Tendency to level

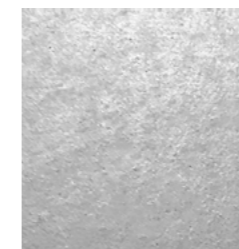
48 MPa

Compression resistance

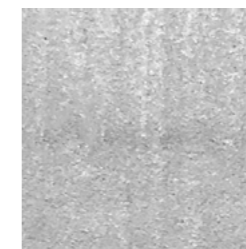
1 Components

Powder + water

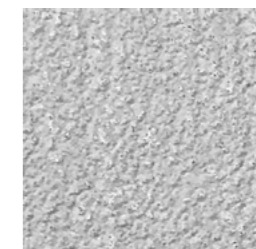
GRANULOMETRIES



Fine



Medium



Base



## microlevel® FINE

It is a microcement of fine texture finish. Adding the toner of the chosen color we will obtain a decorative surface with stucco effect. It is recommended for vertical surfaces, since it is not non-slip. However, it could also be applied on horizontal surfaces.

Classified as CT-C30-F9 according to the UNE-EN 13813 standard.

Performance: 0,5 Kg/m<sup>2</sup>

Proportion: 10 Kg Microlevel Fine + 3,5 L of water.

Format: 10 Kg

It is suitable for:



Vertical surfaces

Qualities:



UNE EN 13813  
CT-C30-F9



## microlevel® MEDIUM

Having a thicker particle size than the Fine Microlevel, its finish is more subtle (less water). Adding the toner of the chosen color, the result will be a slightly textured surface, much more resistant and of superior hardness. The thickness of the aggregate makes it non-slip. It can be applied on a multitude of supports, however, its most recommended use is on pavements with medium traffic. It is recommended only for horizontal surfaces.

Classified as CT-C40-F10 according to the UNE-EN 13813 standard.

Performance: 0,6 Kg/m<sup>2</sup>

Proportion: 20 Kg Microlevel Medium + 6 L of water.

Format: 20 Kg

It is suitable for:



Floor

Qualities:



UNE EN 13813  
CT-C40-F10



Antislip



## microlevel® BASE

It is a microcement that is used as a preliminary step to the Fine Microlevel or Medium Microlevel. However, it can also be applied as a single step for the same base to act as a final finish. The result will be a much rougher surface, without any stucco effect and with a high non-slip power. Adding the toner of the chosen color we will obtain a decorative finish, with a high planimetry that will allow the product to match very well on horizontal surfaces. It is recommended for pavements and floors of extreme traffic.

Classified as CT-C40-F10 according to the UNE-EN 13813 standard.

Performance: 1 Kg/m<sup>2</sup>

Proportion: 20 Kg Microlevel Base + 5 L of water.

Format: 20 Kg

It is suitable for:



Floor

Qualities:



UNE EN 13813  
CT-C40-F10



Antislip

# micropool®

## - THE ADAPTATION -

### BICOMPONENT MICROCEMENT

The Micropool microcement line is characterized by being a bicomponent coating that only needs to be mixed with a catalyst for hardening

It is specially designed for applications on surfaces immersed in water such as swimming pools. Specifically formulated to create some permeability to water vapor and thus avoid the blister or the appearance of blisters due to lack of permeability.

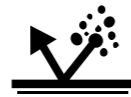
### MICROPOOL CHARACTERISTICS



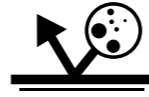
Waterproofing



Water durability

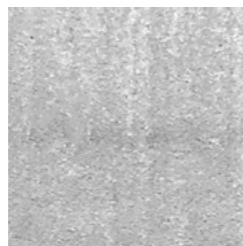


Resistance to chlorine and salt water

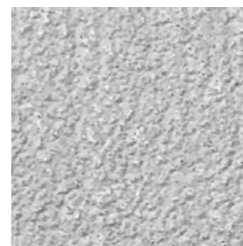


Does not produce bubbles

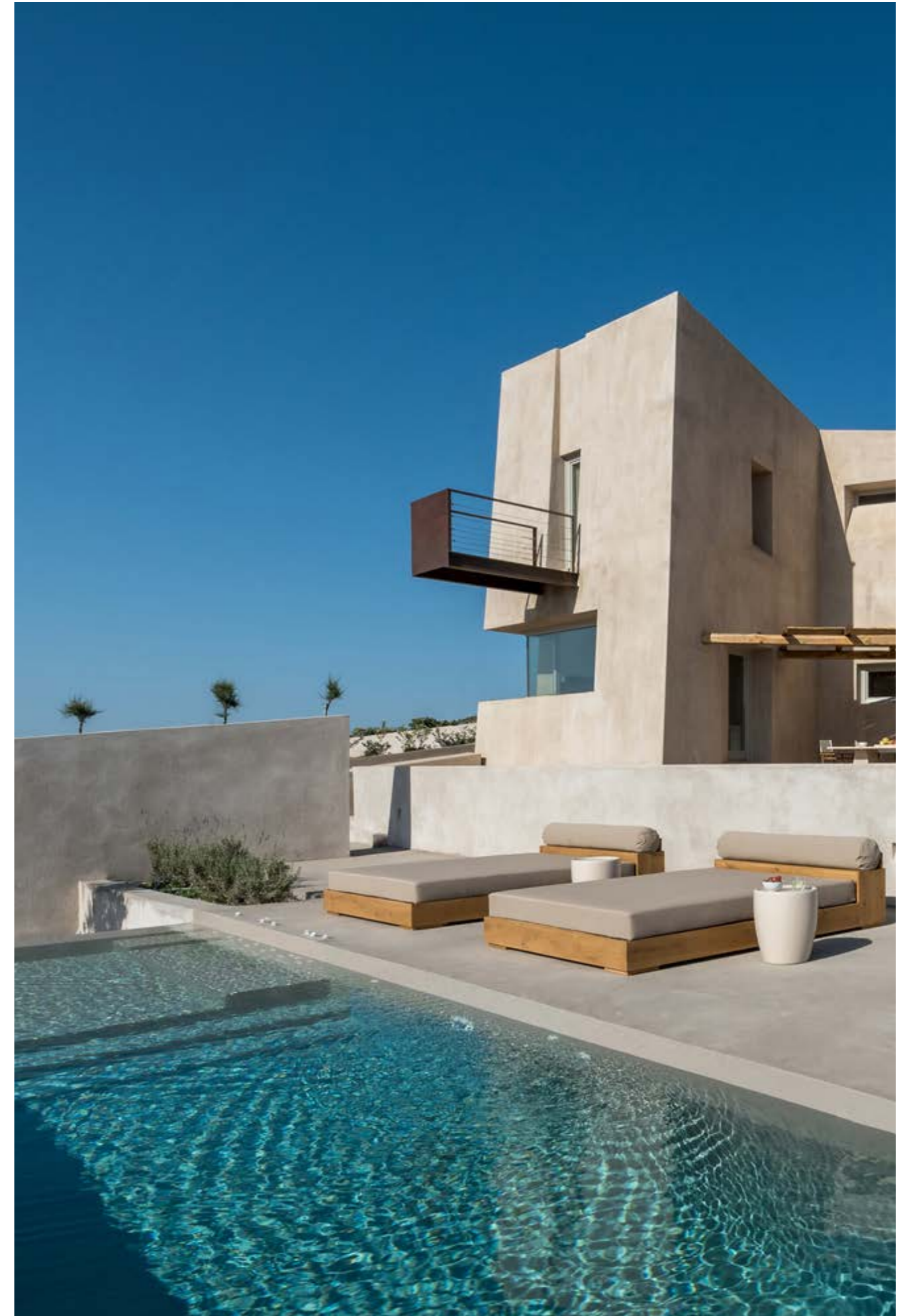
### GRANULOMETRIES



Finisher



Base





## micropool® FINISHER

26 It is a microcement of fine texture finish. Adding the toner of the chosen color we will obtain a decorative surface with hardly any stucco effect. It is recommended to apply two coat of Micropool Finish on the Micropool Base.

Classified as CT-C30-F9 according to the UNE-EN 13813 standard.

Performance: 1 Kg/m<sup>2</sup>

Proportion: 10 Kg Micropool Finish + 1L of catalyst.

Format: 10 Kg

It is suitable for:



Vertical surfaces



Floor

Qualities:



UNE EN 13813  
CT-C40-F10



Antislip



## micropool® BASE

27 It is a microcement that is used as a preliminary step to the Fine Micropool. It is especially suitable for immersion in water. It has a coarse granulometry to regularize the support. Its application is done with trowel directly on the gunite or concrete. It is recommended to apply two coat of Micropool Finish on the Micropool Base.

Classified as CT-C40-F10 according to the UNE-EN 13813 standard.

Performance: 2 Kg/m<sup>2</sup>

Proportion: 10 Kg Micropool Base + 1L of catalyst..

Format: 10 Kg

It is suitable for:



Vertical surfaces



Floor

Qualities:



UNE EN 13813  
CT-C40-F10



Antislip



# microne.

## - SIMPLICITY -

### READY TO USE MICROCEMENT

The Microne microcement line is characterized by being ready to use and waterproof in mass. Ready to use since it does not need resin or water for its preparation. Just add the color and shake. Thanks to its high impermeability it is not necessary to apply several layers of sealant to protect it. A single coat of varnish is enough to avoid dust and stains. In addition, the possible marks of the roller and those produced by the absorption of the surface are avoided.

Obviously, the execution times of the work decrease considerably by not requiring primers, varnish layers or waiting times between coats.

Ideal for wet places such as bathrooms, shower trays or outdoor as it does not darken by water. It has a great adherence in different supports and very good resistance to wear. Easy workability and application. It is not suitable for swimming pools or surfaces in continuous immersion.

### MICRONE'S CHARACTERISTICS



Waterproofing



Minimal stucco effect

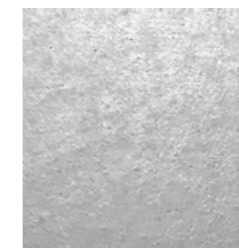
**27** MPa

Compression  
resistance

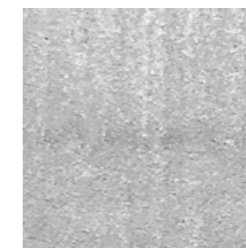
**1** Components

Ready to use

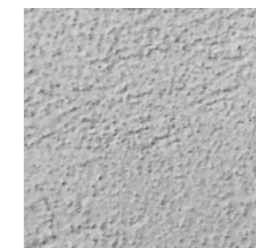
### GRANULOMETRIES



Fine



Medium



Fine base



## microne. FINE

It is a microcement of fine texture finish. Adding the toner of the chosen color we will obtain a decorative surface with almost no stucco effect. It is recommended only for vertical surfaces, since it is not non-slip.

Performance: 0,6 Kg/m<sup>2</sup>

Format: 10 Kg

It is suitable for:



Vertical surfaces



## microne. MEDIUM

It has a coarse granulometry than the Fine Microne. With hardly any stucco effect. Adding the toner of the chosen color, the result will be a slightly textured surface, much more resistant and of superior hardness. The thickness of the aggregate makes it non-slip. It can be applied on a multitude of supports, however, its most recommended use is on pavements with medium traffic. It can also be applied on vertical surfaces or walls.

Performance: 0,6 Kg/m<sup>2</sup>

Format: 10 Kg

It is suitable for:



Vertical surfaces



Floor



Antislip

Qualities:



## microne. FINE BASE

It is a low roughness microcement. No stucco effect. Adding the toner of the chosen color we will obtain a decorative finish with a very good planimetry on horizontal surfaces. It stands out for having a greater non-slip power and for being more resistant and hard than the Medium and Fine. It is recommended for high traffic pavements and floors. It can also be applied on vertical surfaces or walls. It should be noted that it can also be used as a Base.

Performance: 1 Kg/m<sup>2</sup>

Format: 10 Kg

It is suitable for:



Vertical surfaces

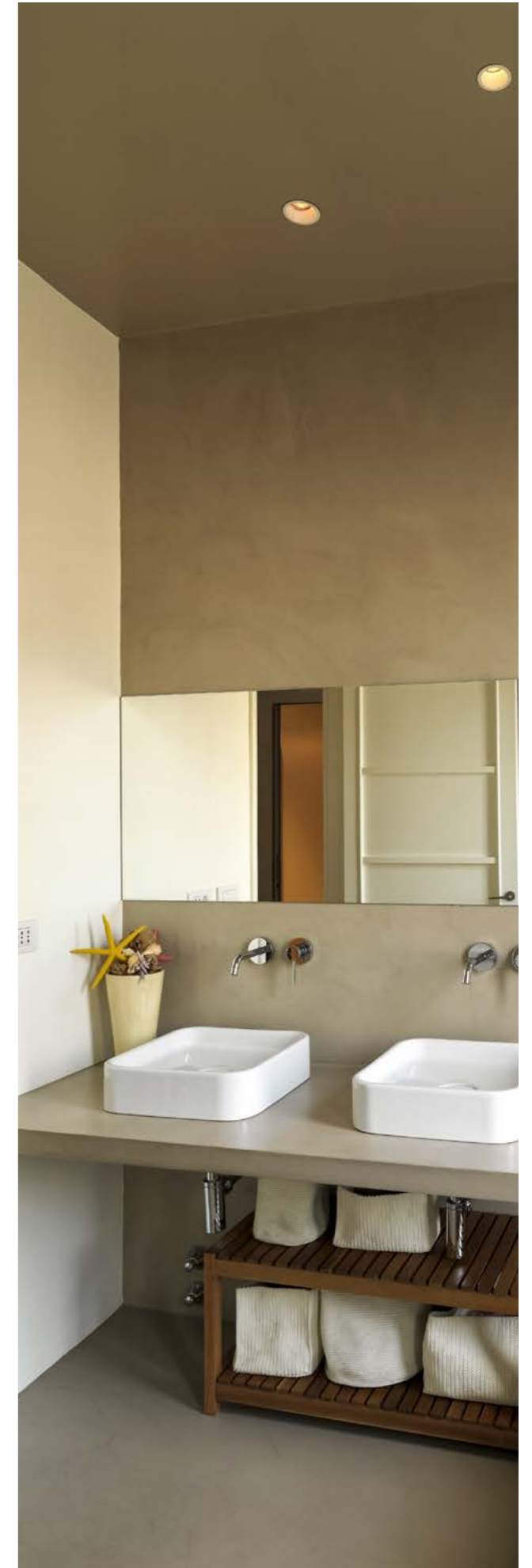


Floor



Antislip

Qualities:





# microröck®

## - THE FORCE -

### BICOMPONENT MICROCEMENT

Microröck line is characterized by being bicomponent and waterproof. It has unparalleled features so far, since it is a microcement whose hardness is superior to that of polished cement with a mineral appearance. In addition, its resistance to compression and traction is incomparable. Thanks to this, the sealants do not soften the product and the microcement is not affected by solvents or chemical compounds.

Due to its impermeability it is not necessary to apply several layers of sealant to protect it. A single coat of varnish is enough to avoid dust and stains.

It does not break or crack. It does not stain either. It has a high adherence to any support. It is specially designed to apply in areas of high traffic.

### MICRORÖCK CHARACTERISTICS



Waterproofing



Minimal stucco effect

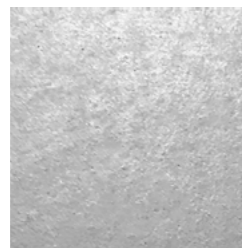
80 MPa

Compression resistance

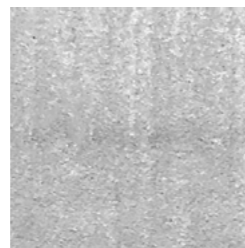
2 Components

Ready to use + hardener

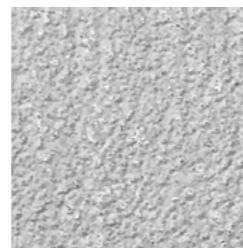
### GRANULOMETRIES



Fine



Medium



Base





## microröck. FINE

It is a microcement of fine texture finish. Adding the toner of the chosen color we will obtain a decorative surface with almost no stucco effect. It is recommended for both vertical and horizontal surfaces.

Classified according to Standard UNE-EN 13813 as CT-C40-F10.

Performance: 0,6 Kg/m<sup>2</sup>

Proportion: 10 Kg Fine Microröck + 1L of catalyst.

Format: 10 Kg

It is suitable for:



Vertical surfaces



Floor

Qualities:



UNE EN 13813  
CT-C40-F10



## microröck. MEDIUM

It has a coarse granulometry than the Fine Microröck. With just stucco effect. Adding the toner of the chosen color, the result will be a slightly textured surface, much more resistant and of superior hardness. The thickness of the aggregate makes it non-slip. It can be applied on a multitude of supports, however, its most recommended use is on pavements with a high traffic. It can also be applied on vertical surfaces.

Classified according to Standard UNE-EN 13813 as CT-C40-F10.

Performance: 1 Kg/m<sup>2</sup>

Proportion: 10 Kg Microröck Medium + 1L of catalyst.

Format: 10 Kg

It is suitable for:



Vertical surfaces



Floor

Qualities:



UNE EN 13813  
CT-C40-F10



Antislip



## microröck. BASE

It is a microcement that is used as a preliminary step to the Fine Microröck or Medium Microröck. However, it can also be applied as a single step for the same base to act as a final finish. The result will be a much rougher surface, without any stucco effect and with a high non-slip power. Adding the toner of the chosen color we will obtain a decorative finish, with a high planimetry that will allow the product to match very well on horizontal surfaces. It is recommended for pavements and floors of extreme traffic. It can also be applied on vertical surfaces.

Classified according to Standard UNE-EN 13813 as CT-C40-F10.

Performance: 2 Kg/m<sup>2</sup>

Proportion: 10 Kg Microröck Base + 1L of catalyst.

Format: 10 Kg

It is suitable for:



Vertical surfaces



Floor

Qualities:



UNE EN 13813  
CT-C40-F10



Antislip

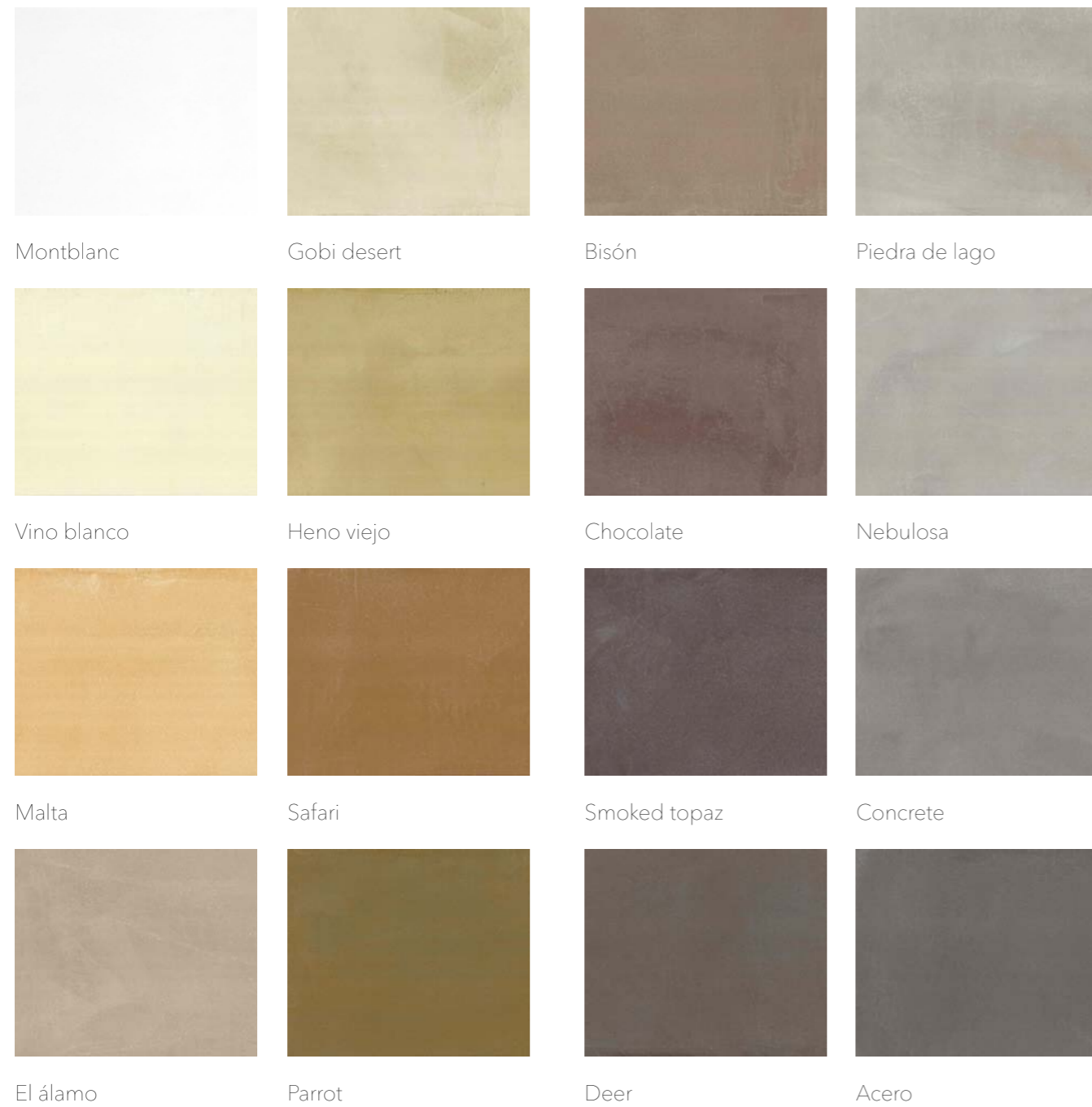


# TONERS

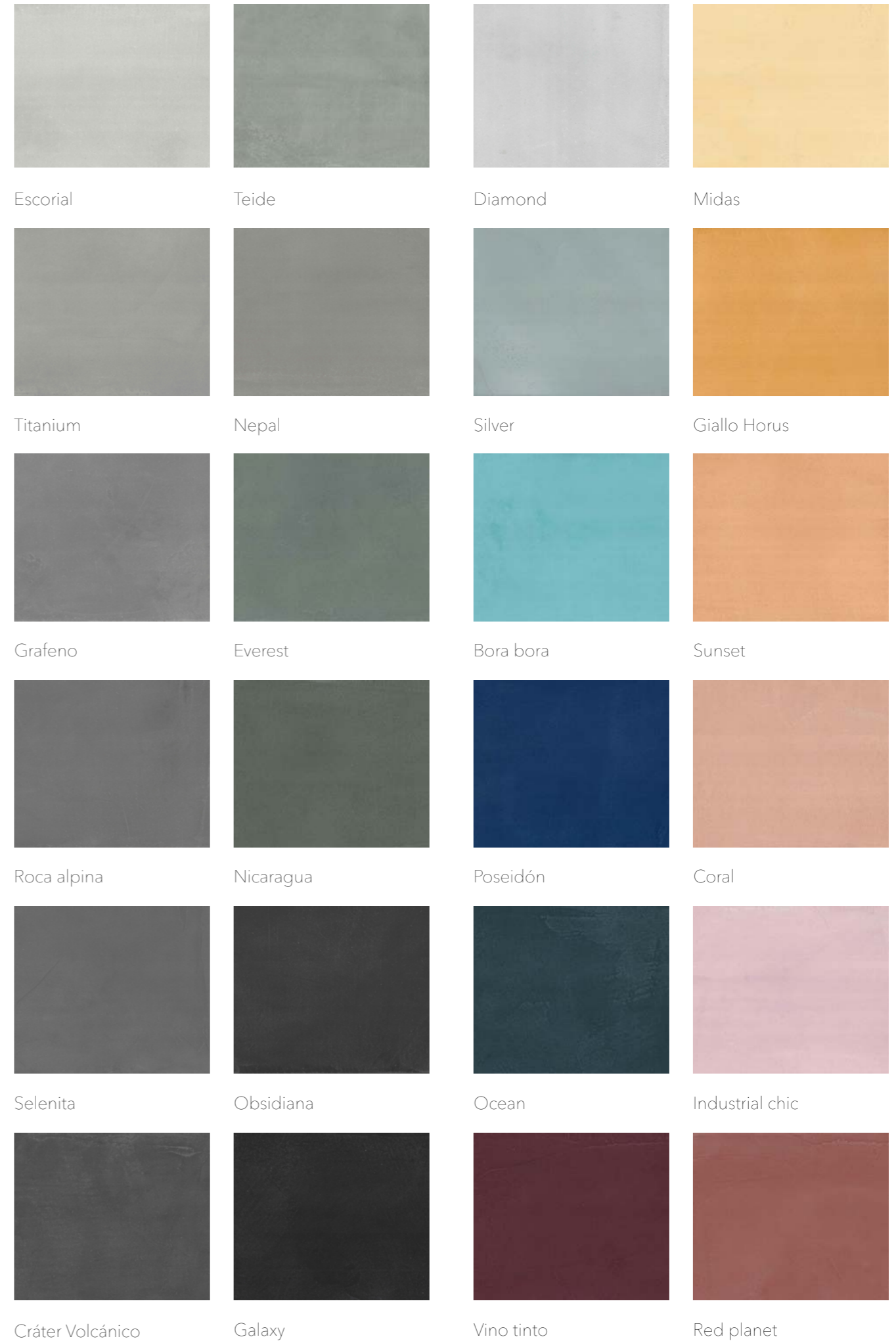
# TONERS

40 colour toners for microcement systems. They must be mixed with water for Microdur, Microlevel and Mi-cropool systems; or with resin (Resin-Cem) for Micro-duo systems.

Format: 100g, 200g y 500g.



38



39

**PREPARATION**  
**ADHESION**  
**PROMOTER PRIMER**





## PRIMER 100

It is a water-based resin that acts as an adhesion promoter between a porous or highly porous surface and microcement. It has high adherence and a high solids content allowing it to saturate porous substrates and keep the resin on the surface. It has great elasticity, providing it with excellent resistance to all weather conditions. It maintains its tack (Residual Tack) for approximately 12 hours.

Performance: 6 - 8 m<sup>2</sup>/L

Format: 5L y 25L

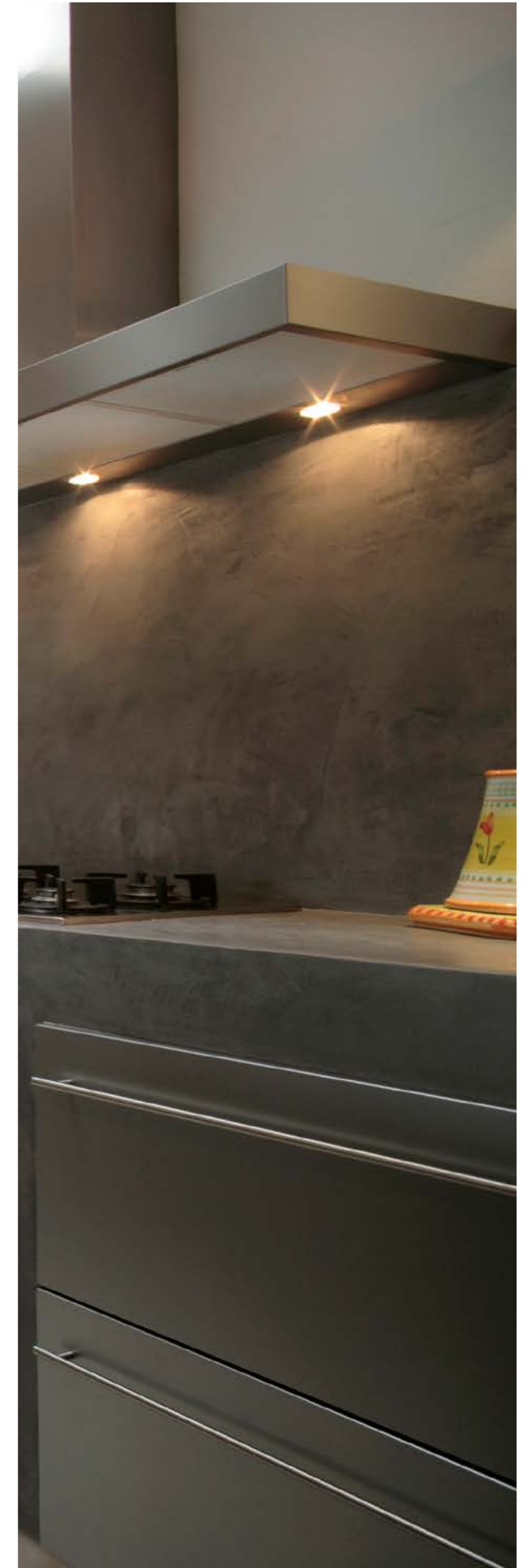


## PRIMER TAC

It is a water-based resin that acts as an adhesion promoter between non-porous surfaces (tiles, marble, metal or terrazzo) and the microcement. It has high adherence and maintains its tack (Residual Tack) permanently, providing it with a long handling time during application of the subsequent microcement layer. It has great elasticity, providing it with excellent resistance to all weather conditions.

Performance: 6 - 8 m<sup>2</sup>/L

Format: 5L y 25L





# PREPARATION - EPOXY -



## IMPRIPOX

A two component epoxy resin with a high solids content (80%). High chemical resistance and impermeability. It acts as a vapour barrier to block moisture penetration by capillary action and inhibits moisture stains at tile joints. It can also be used as a colourless epoxy varnish on microcements and mortars. It has a high chemical resistance and mechanical strength and hardness to scratching. Easy application by roller.

Performance: 6 - 7 m<sup>2</sup>/L

Format: 5 L + 2 L



## AQUASELL

A two-component water-based epoxy resin. It has very good adhesion even to damp surfaces (less than 8% moisture content). It acts as a vapour barrier by blocking penetration due to capillary action. It can also be used as a water-based epoxy varnish on microcements and mortars. It has a high chemical resistance and mechanical strength. It is also scratch resistant and impermeable. Organic solvent-free.

Performance: 8 m<sup>2</sup>/L

Format: 5 L + 2 L



## GLASS EPOXY 100% SOLIDS

A two-component epoxy resin with 100% solids. It has excellent filling power and is transparent. Very high chemical resistance and impermeability. It acts as a vapour barrier by blocking penetration due to capillary action. It must be applied using a trowel by pouring the product on the surface and spreading using a trowel to dissipate the bubbles produced by the shaking when mixing the two components. It can also be used as an epoxy varnish with a very high gloss finish and a hardness characteristic of glass. It can also be used to seal 3D vinyls. Not suitable for use outdoors.

Performance: 0,8 m<sup>2</sup>/L

Format: 5 L + 2 L



# SEALANTS - PRIMERS -





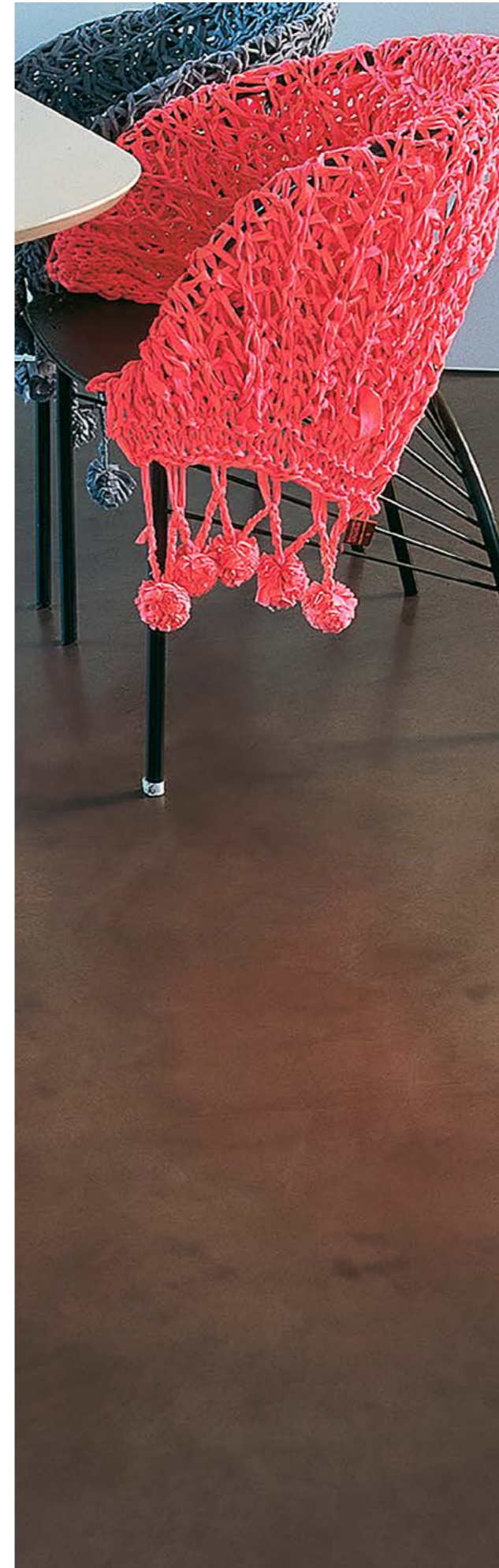
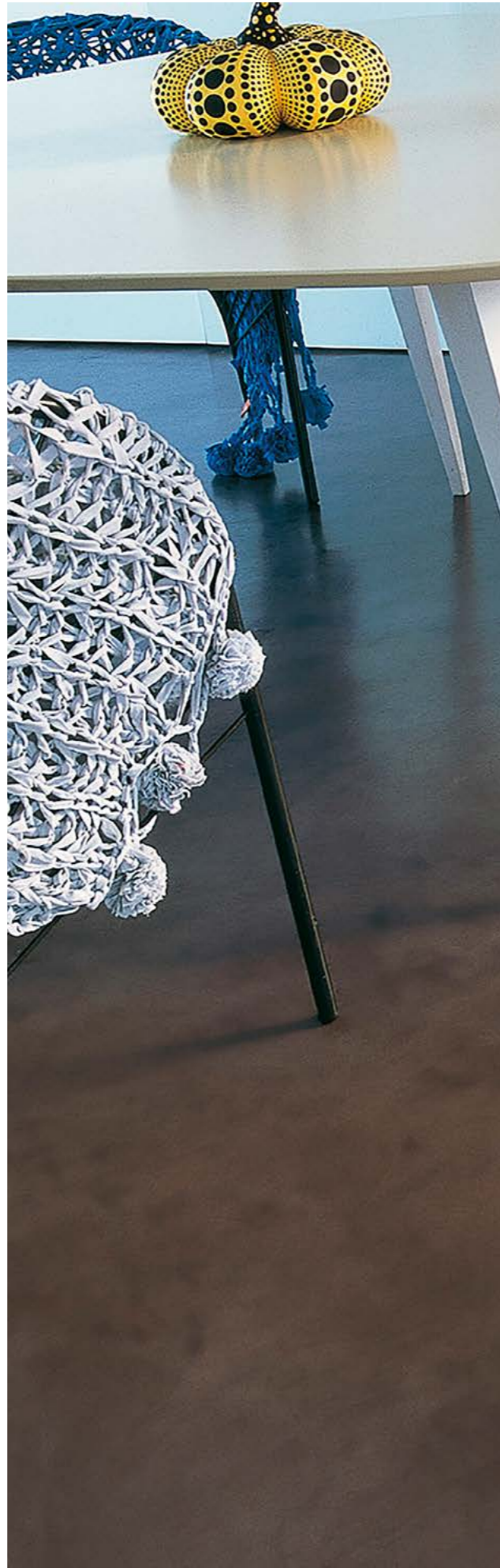
## HYDROPRIMER CI

50

A high solids single-component acrylic sealer primer. It is able to waterproof the substrate and seal it for the subsequent application of a polyurethane finish. It reduces the consumption of these finishes and its pore-covering action avoids roller marks.

Performance: 10 m<sup>2</sup>/L

Format: 5 L



## HARD SEALANT

51

A single-component polyurethane consolidating primer. It not only waterproofs and seals the substrate like other acrylic sealants, it also provides an extraordinary final hardness to the whole system (the greater the hardness of the base, the greater the hardness of the final finish). It is quick drying allowing the application of polyurethane finishes in less time than conventional acrylics. In addition, it causes only slight or zero alteration to the colour of the microcement.

Performance: 10 m<sup>2</sup>/L

Format: 5 L



**SEALANTS**  
**- POLYURETHANE -**



## AQUAMAX PLUS

A water-based two-component polyurethane varnish with excellent hardness and good chemical resistance. It is easy to apply leaving a very uniform final appearance without marks or roller lines. Highly stretched finishes are obtained, without defects and with a smooth feel. Highly resistant to chemical agents such as bleach, hydrochloric acid and vinegar. Impervious to staining by wine, coffee and oil. Presealing with Hydroprimer or Hard Sealant is required. Suitable for indoor and outdoor usage. With matt, satin or gloss finish.

Performance: 8 - 10 m<sup>2</sup>/L

Proportion: 10% (5 L comp "A" + 0,5 L comp "B")

Finish: Glossy, satin and matt

Format: 5 L + 0,5 L



## AQUAMAX DUR

A two-component water-based polyurethane varnish with very high hardness and chemical resistance. Ideal for high traffic surfaces. Very good resistance to scratching and chemical agents such as bleach, hydrochloric acid and vinegar. Impervious to staining by wine, coffee and oil. Its solids content is higher than Aquamax Plus 10%, so it provides a greater filling capacity with more resistant finishes. Very fast drying, partial mixing is recommended. Presealing with Hydroprimer or Hard Sealant is required. Suitable for indoor and outdoor usage. With matt, satin or gloss finish.

Performance: 8 - 10 m<sup>2</sup>/L

Proportion: 20% (5 L comp "A" + 1 L comp "B")

Finish: Glossy, satin and matt

Format: 5 L + 1 L



## AQUAMAX EXTREME

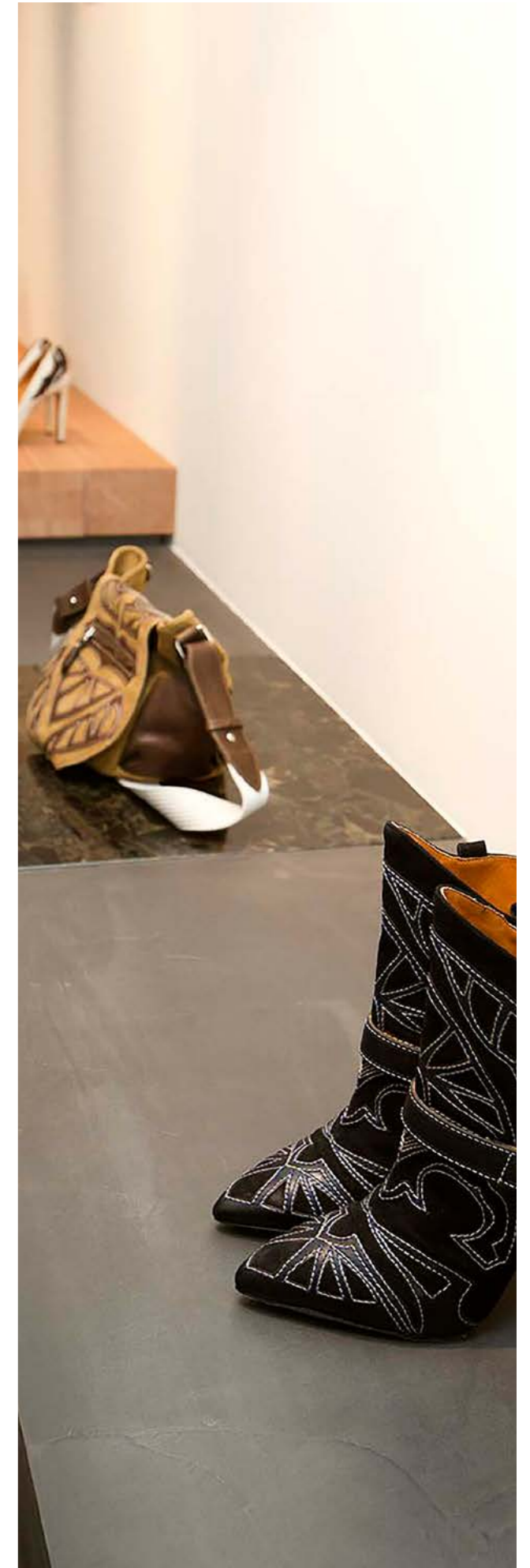
A two-component water-based polyurethane varnish with very high hardness and chemical resistance, even higher than solvent-based polyurethane. Very high solids content providing great covering power with very resistant finishes. Ideal for high traffic systems and those with the most stringent demands. Unaffected by chemical agents such as bleach, hydrochloric acid and vinegar. Impervious to staining by wine, coffee and oil. Presealing with Hydroprimer or Hard Sealant is required. Suitable for indoor and outdoor usage. With matt, satin or gloss finish.

Performance: 8 m<sup>2</sup>/L

Proportion: 20% (5 L comp "A" + 1 L comp "B")

Finish: Glossy, satin and matt

Format: 5 L + 1 L





## MAXIPUR 25%

A two-component solvent-based aliphatic acrylic polyurethane varnish. Its viscosity and solids content is higher than Maxipur 50%, so it provides greater filling and covering capacity. It provides thicker films with excellent chemical resistance and very high hardness for the most demanding finishes. Ideal for high traffic surfaces. It is very important to previously seal with Hydroprimer or Hard Sealant to prevent the product altering the microcement's colour and to give perfect finishes without irregularities. Suitable for indoor and outdoor usage, no yellowing.

Performance: 8 - 9 m<sup>2</sup>/L

Proportion: 25% (4 L comp "A" + 1 L comp "B")

Finish: Glossy, satin and matt

Format: 4 L + 1L



## MAXIPUR 50%

A two-component solvent-based varnish, aliphatic acrylic polyurethane. It has excellent hardness, chemical resistance and does not turn yellow when used outdoors. Its high solids compound and low viscosity give it great penetration and adhesion on a range of substrates. Lower viscosity than Maxipur 25%. Ideal for high traffic systems due to its high resistance to friction and excellent surface hardness. It is very important to previously seal with Hydroprimer or Hard Sealant to prevent the product altering the microcement's colour and to give perfect finishes without irregularities. Suitable for indoor and outdoor usage.

Performance: 10 m<sup>2</sup>/L

Proportion: 50% (4 L comp "A" + 2 L comp "B")

Finish: Glossy, satin and matt

Format: 4 L + 2L



## MAXIPUR 100%

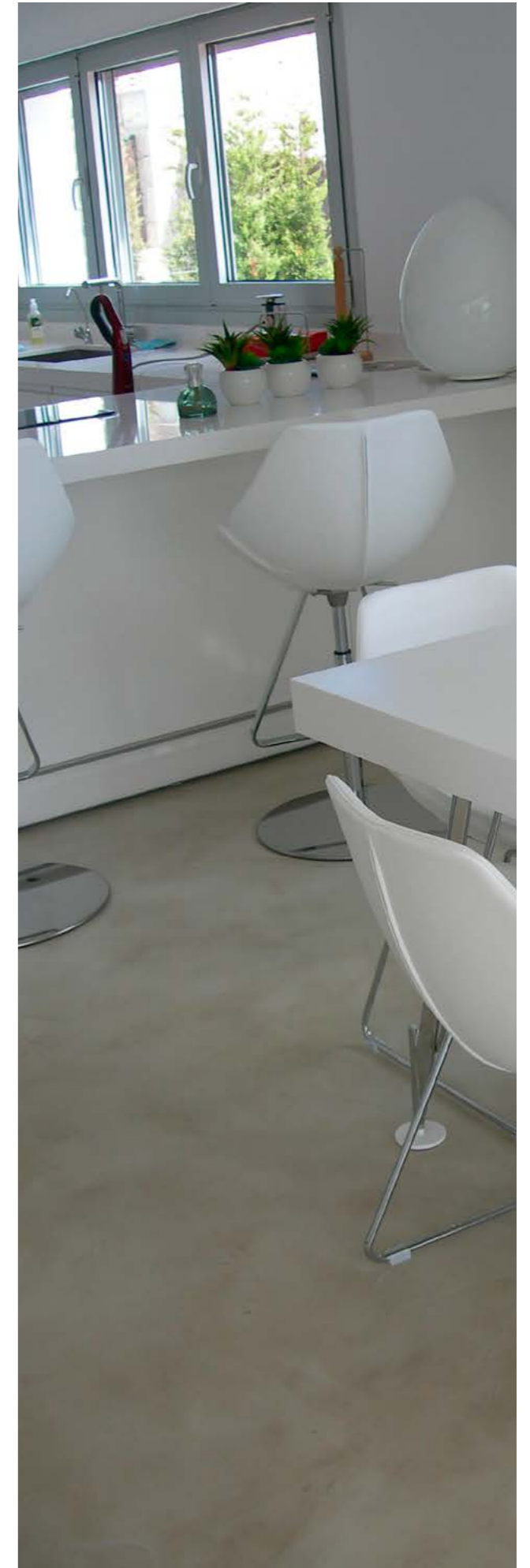
Two component solvent based varnish, aliphatic acrylic polyurethane. Specially designed for extreme traffic surfaces. Very low viscosity varnish, highly impermeable and resistant to chlorine and bleach. It provides a large amount of solids. Its use is especially indicated as immersion protection or sealant for swimming pools and ponds, given that it gives the varnished supports (microcement, wood, etc.) an extreme hardness and high impermeability. It also stands out for its application without irregularities. High planimetry still applied with roller. It is recommended to apply Hydroprimer beforehand. Suitable for indoor and outdoor usage.

Performance: 12 m<sup>2</sup>/L

Proportion: 100% (4 L comp "A" + 4 L comp "B")

Finish: Glossy, satin and matt

Format: 4 L + 4L



# SPECIALITIES





## decolevel floor.

Self-leveling polymeric colored mortar of high technical performance, to apply between 2 to 7 mm thick, in the realization of continuous decorative, warm and innovative flooring in interiors, mainly of homes and shops, providing an avant-garde look.

Classified according to Standard UNE-EN 13813 as CT-C40-F10.

Performance: 1,7 Kg/m<sup>2</sup>

Proportion: 20 Kg Decolevel floor + 4.5 L of water.

Format: 20 Kg

It is suitable for:



Floor

Qualities:



UNE EN 13813  
CT-C40-F10



Antislip



## stamped restore

It is a cement-based two-component paint, consisting of special aggregates of high hardness and strength plus a colored mixing resin. Compatible with all types of surfaces. It is adherent, breathable and of high hardness.

It can be supplied with a thicker particle to create a non-slip surface. Once the Stamped restore dry apply Aquamax Dur for the protection of the cement-based coating, this water-based sealant gives us greater surface hardness to the cementitious paint.

Classified according to Standard UNE-EN 13813 as CT-C40-F10.

Performance: 0,5 Kg/m<sup>2</sup>

Proportion: 10 Kg Stamped restore + 10 L the resin.

Format: 10 Kg and 10 L

It is suitable for:



Vertical surfaces



Floor

Qualities:



UNE EN 13813  
CT-C40-F10



Antislip

## METAL

Metals have a place in any decorative style. In retro spaces you can use gold or bronze tones. In minimalist areas or Nordic air you can play with silver tones. In any case, a metal finish will always project elegance and sophistication.

With the metallic range we obtain an innovative coating able to adapt to any surface or furniture. Achieved thanks to the corrosion of the metals whose result is a dazzling metallic effect.

Format: 1,5 Kg o 15 Kg

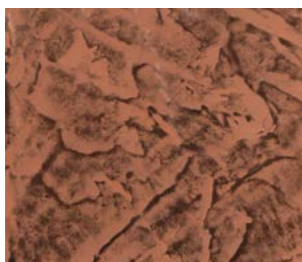
62



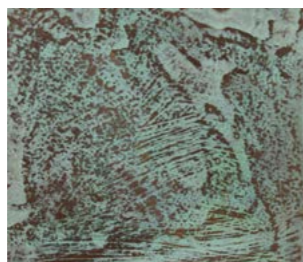
Gold



Rusty gold



Copper



Rusty copper



Silver



Bronze



## oxidher

### CORTEN STEEL SYSTEM

Corten Steel is an oxidation system capable of converting a simple surface into one with an oxidised effect in less than five minutes. It is composed of a resin, iron powder and three different activators. Depending on which of them is applied the system will oxidise in red, blue or green. There is a great variety of oxidised shades making this a decorative system that is easily adaptable to different rooms and styles. It is recommended for both indoor and outdoor usage and it can be applied to all types of substrates: metal, wood, cement, walls, ceramics, etc.

Format: 2 Kg



Iron



Red



Green



Orange

63





## FLOOR PROTECT

64

Floor protect is a product specially designed to maintain and protect microcement. It waterproofs, revives and protects previously varnished surfaces. It restores minor scratching to a floor. It does not contain waxes, so it does not scratch when walked on and it is durable. Just by applying it and spreading it using a mop will protect floors for long periods of time.

Format: 5 L



65

# CEMHER®

- ORIGIN -

**kilnher**®

C/ Llanterners 44,  
Pol. Ind. La Figuera  
46970 Alaquas (Valencia)

+34 961 50 50 24  
info@cemher.com  
www.cemher.com  
www.kilnher.com